

# HVA40-5

VLF High Voltage Test Set  
Extreme Output Voltage



**5  $\mu$ F** at 0.1 Hz  
at 27 kV<sub>rms</sub>

**57 kg**

**VLF 0.1 Hz**  
**45 kV<sub>peak</sub>**

The compact design and unmatched high voltage output power to weight ratio of the HVA test sets are second to none in the market, and make the b2 electronic high-voltage generators the lightest in all classes at all voltage levels.

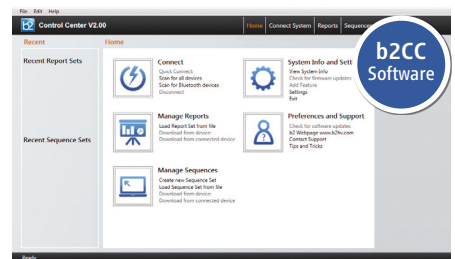
**Dry system:** the HVA40-5 test set is a dry type test system, have no oil filled components. This means less maintenance, compact and lightweight design and no limitation of operating time.

**Safety:** The instrument has two independent earthing devices (electronic and mechanical discharging) and a 12 kV feedback protection system to protect both operator and instrument.

**Connectivity:** on site, no external PC is needed. All results can be downloaded later by USB for further investigation and easy report creation on the PC software.

**Solid HV connectors:** robust HV-connectors allow the use of different HV test lead lengths, the quick exchange for a replacement cable, or the simpler upgrade path for connection of diagnostics systems.

**Unlimited operating time:** Operating time of the HVA high voltage generators are not thermally limited and can be operated continuously.



## Features

- Output voltage 32 kV<sub>rms</sub>, 45 kV<sub>peak</sub>
- Pure sinusoidal output voltage (load-independent)
- Output current 120 mA max.
- 5  $\mu$ F @ 0.1 Hz @ 27 kV<sub>rms</sub>
- Highest test capacity of 15  $\mu$ F
- Real time oscilloscope display of output voltage
- Breakdown voltage and load detection
- RMS digital metering of voltage and current
- PC software "b2 Control Center" with various reporting functions included
- Cable testing according: CENELEC HD 620/621, IEEE 400.2-2004, IEC60502-2:2014
- Programmable test sequences
- Upgradable with Partial Discharge and Tan Delta diagnostics system (optional)
- 12 kV transient protection (50 Hz)
- Dual Discharge Device (DDD®), integrated electronic and mechanical discharge devices
- Easily exchangeable HV cable
- Vacuum Bottle Test
- Sheath Fault Locating (in combination with Earth Fault Locator) (not included)

[www.b2hv.com](http://www.b2hv.com) | [info@b2hv.com](mailto:info@b2hv.com)

# HVA40-5

www.b2hv.com | info@b2hv.com



dry system



upgradeable to  
PD and TD  
diagnostics systems



unlimited  
operating time



Transportbox  
(optional)

TYPE		HVA40-5
Article number		SH5009
Input voltage		190-240 V, 50/60 Hz, 3 kVA
Output voltage	VLF sine wave	0-45 kV peak, 32 kV rms
	DC	± 0-45 kV
	VLF square wave	0-45 kV
	accuracy	± 1%
	resolution	0.1 kV
Output current		0-120 mA
Resistance range		0.1 MΩ-5 GΩ
Output frequency		0.01-0.1 Hz in steps of 0.01 Hz default: 0.1 Hz (auto frequency)
Output load		4.3 μF @ 0.1 Hz @ 30 kV rms 5.0 μF @ 0.1 Hz @ 27 kV rms 15.0 μF @ 0.01 Hz @ 30 kV rms 15.0 μF maximum Capacitance! <sup>1</sup>
Sheath test	max. test voltage	10 kV
	trip current	0.1-5.0 mA
Sheath fault location <sup>2</sup>	max. test voltage	10 kV
	Pulse/Period	1:3 / 4 s, 1:5 / 4 s, 1:5 / 6 s, 1:9 / 6 s
Output Modes		AC (VLF) Symmetrical and load independent across full range, DC (plus or negative polarity), Burn-/Fault Condition or Fault Trip Mode, Jacket/Sheath Testing
Safety		12 kV/50 Hz Feedback Protection   integrated electronic and mechanical discharge devices - DDD <sup>®</sup> : Dual Discharge Device (internal)
Memory		50 Test Record Stored, USB almost unlimited
Metering		Voltage and Current (True rms and/or peak), Capacitance, Resistance, Time, Flashover Voltage
Duty cycle		Continuous! No thermal limitation for operating time.
HV-Cable		5 m with MC contact and alligator clamps
Software		"b2 Control Center" (included)
Computer interfaces		RS2323 (standard), USB flash drive
Dimensions LxWxH		450 x 340 x 520 mm
Weight		57 kg
Environment		temperature: storage:-25°C to + 70°C, operating: -10°C to + 50°C humidity: 5-85% non condensing

<sup>1</sup> at lower frequency and voltage | <sup>2</sup> in combination with locating device (not in scope of supply)

Riedstrasse 1 | 6833 Klaus | AUSTRIA | T +43 (0)5523 57373 | info@b2hv.com  
DHV1386 Rev05 - ENGLISH - Subject to alternations. Errors excepted. Illustrations are not binding.



## Options

- External Tan Delta diagnostics system
- Partial Discharge with integrated Tan Delta diagnostics system

## Scope of delivery

- HVA40-5 testing device
- PC Software - b2 ControlCenter
- HV cable 5 m
- Power and earthing cable
- USB Stick
- Operating manual