

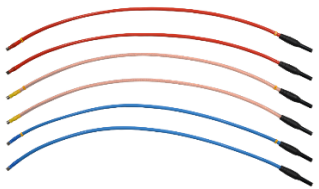


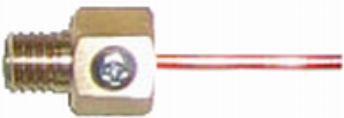
## 120A cables with additional terminals

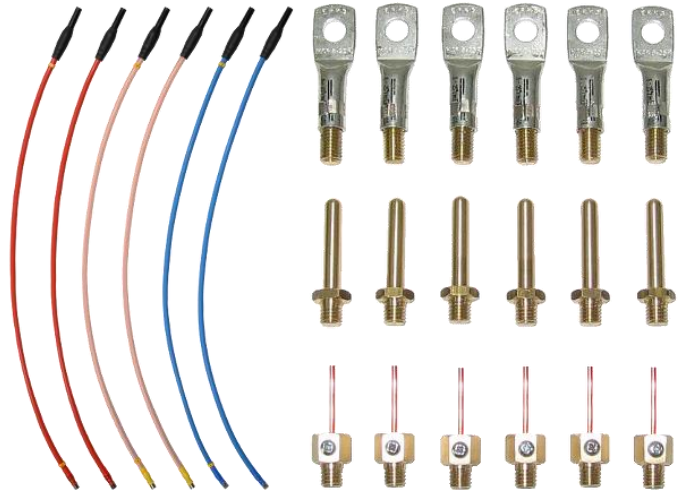
### Calmet AKD300

- Continuous 120A current
- Easy change of terminals
- 6mm straight brass pin
- Copper wire up to  $\Phi 2.5\text{mm}$
- Ring tip for M8 screw

AKD300 - 120A cables and additional terminals are set of special, flexible high current cables with terminals for easy connection between calibrator or meter and device under test. The different terminals allow for easy and reliable connection.

### Accessory description

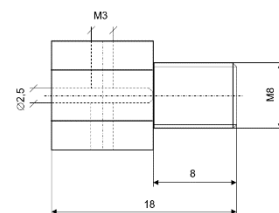
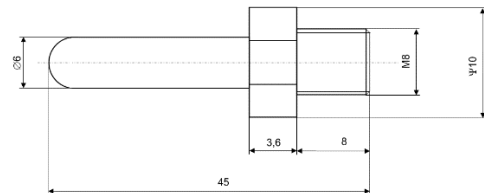
<p>120A cables, cross section 25 mm<sup>2</sup>, length 1m No. AKD300-01</p>	
<p>Ring tip for M8 screw No. AKD300-02</p>	
<p>Straight brass pin <math>\Phi 6\text{mm}</math> No. AKD300-03</p>	
<p>Copper wire up to <math>\Phi 2.5\text{mm}</math> diameter No. AKD300-04</p>	



### AKD300 set contents:

- 1- 6 x 120A cables (No. AKD300-01);
- 2- 6 x ring tip terminal (No. AKD300-02);
- 3- 6 x brass pins (No. AKD300-03);
- 4- 6 x copper wires (No. AKD300-04);

### Terminals dimensions



Calmet sp. z o.o.  
Kukulcza 18 Street, 65-472 Zielona Gora, Poland  
Tel. +48 68 324 04 56 Fax +48 68 324 04 57  
E-mail: mail@calmet.com.pl Internet: http://www.calmet.com.pl